



## Matterport Property Report

### Saw Mill Road Guest Cottage

Indoor Scanned Area 852 sq. ft.

Sizes and dimensions are approximate; actual may vary

## Description

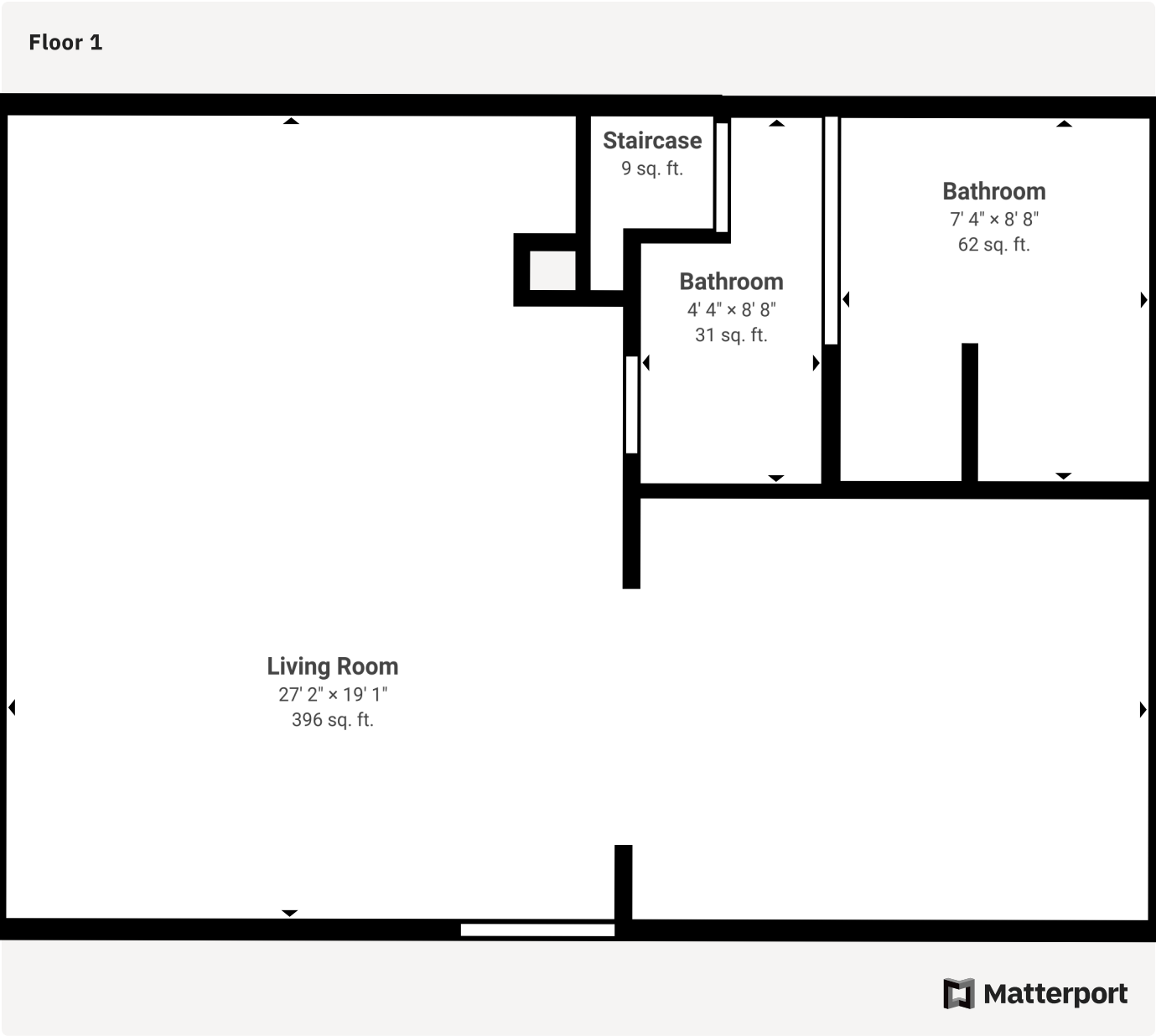
Sited on nearly 2 acres, the property has a separate adorable 2 bedroom cottage, fully restored. Imagine guests staying over, or consider renting the space, either way, the cottage offers huge options, and is completely self-contained with open-air kitchen, renovated bath, and dedicated utilities (including separate septic).

## Indoor Dimensions

Room	Dimensions	Ceiling Height	Area	Floor
Floor 1	–	–	498 sq. ft.	–

Bathroom	7' 4" × 8' 8"	8' 0"	62 sq. ft.	Floor 1
Bathroom	4' 4" × 8' 8"	8' 0"	31 sq. ft.	Floor 1
Living Room	27' 2" × 19' 1"	8' 1"	396 sq. ft.	Floor 1
Staircase	N/A	0' 7"	9 sq. ft.	Floor 1
<b>Floor 2</b>	–	–	<b>353 sq. ft.</b>	–
Bedroom	13' 6" × 12' 11"	Up to 7' 11"	173 sq. ft.	Floor 2
Bedroom	10' 0" × 12' 10"	Up to 8' 0"	128 sq. ft.	Floor 2
Other	2' 11" × 13' 1"	Up to 8' 0"	38 sq. ft.	Floor 2
Staircase	5' 5" × 2' 8"	N/A	15 sq. ft.	Floor 2
<b>Indoor Property Totals</b>	–	–	<b>852 sq. ft.</b>	–

Layout



**Floor 2**

